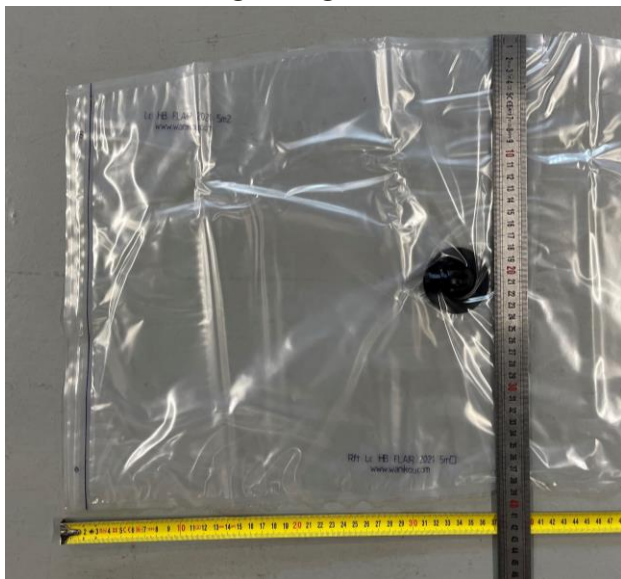


# TAKE A PHOTO OF YOUR STRUT

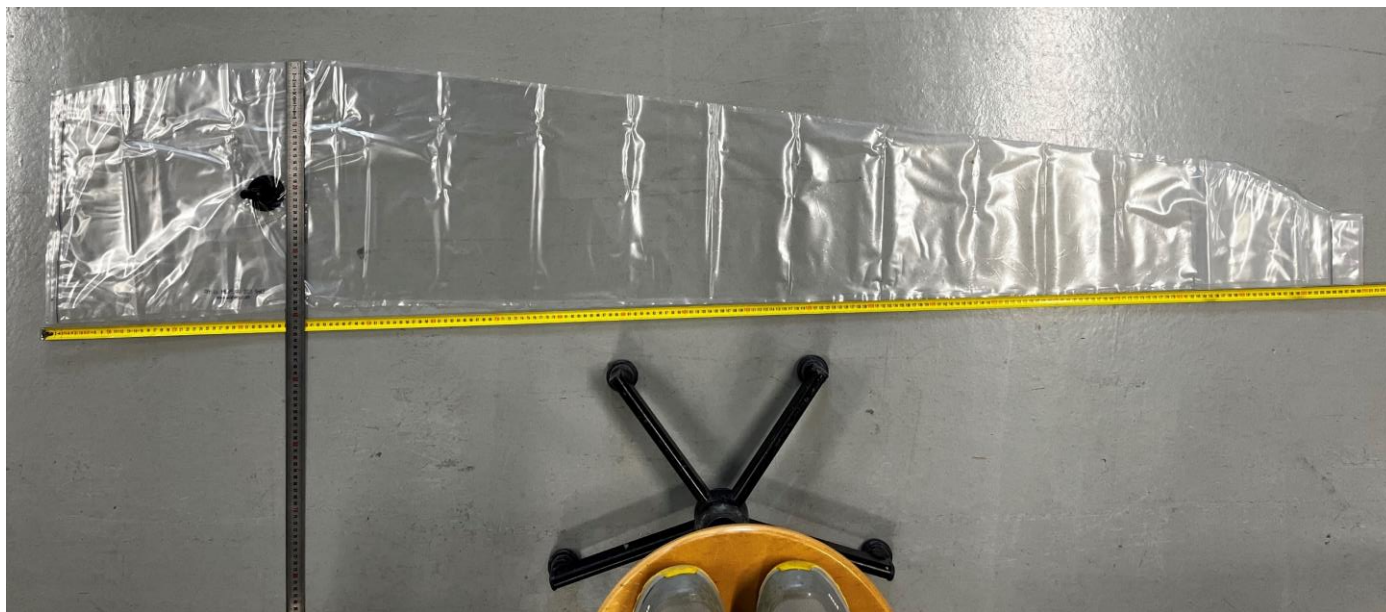
1. Circle the valve with a marker if it is transparent



4. Zoom in on the part with the valve on the leading edge



2. Lay the strut flat on the floor and place a measuring tape next to it (a ruler can be used, in which case you will need to give us its measurement)
3. Take a photo of your strut. Don't hesitate to stand on a stool to get enough distance. Make sure you stand vertically above the strut for optimum reproduction



# TAKE A PHOTO OF YOUR STRUT

Position (7.):

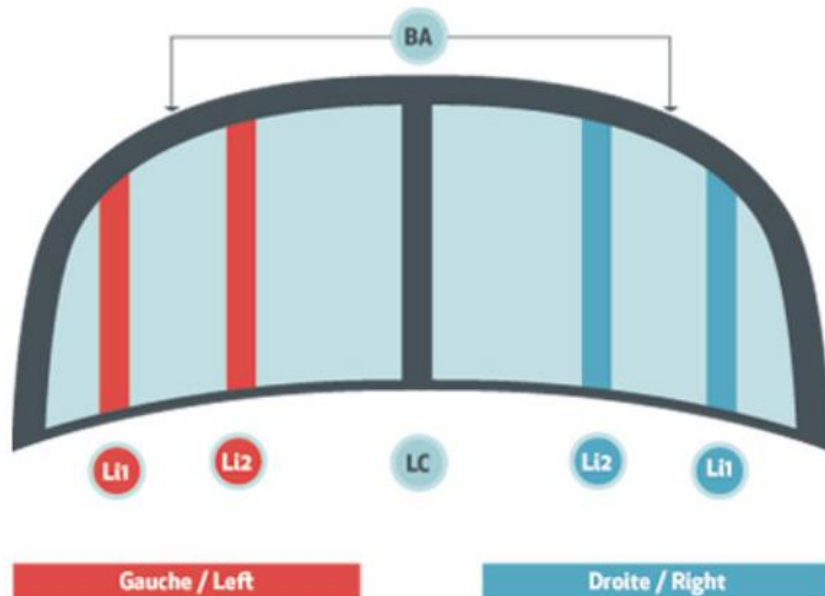
Brand :

Model :

Size :

Year :

5. Make sure the photo is **in focus**, so that the measurements on the meter can be read when zoomed in.
6. Your photos are ready to be sent. Please send them to us in the **best possible quality**.
7. Send your e-mail to **contact@wanikou.com** specifying the **position** your strut (using the diagram below), the brand, year and size of your wing in the subject line.



8. Please specify a few measurements so that the reproduction can be as exact as possible.:

- Total length = \_\_\_\_\_ cm
- Leading edge width = \_\_\_\_\_ cm
- Trailing edge width = \_\_\_\_\_ cm



## To know more :

Pattern creation can extend production lead times by a few days, especially in high season.